

8

7

6

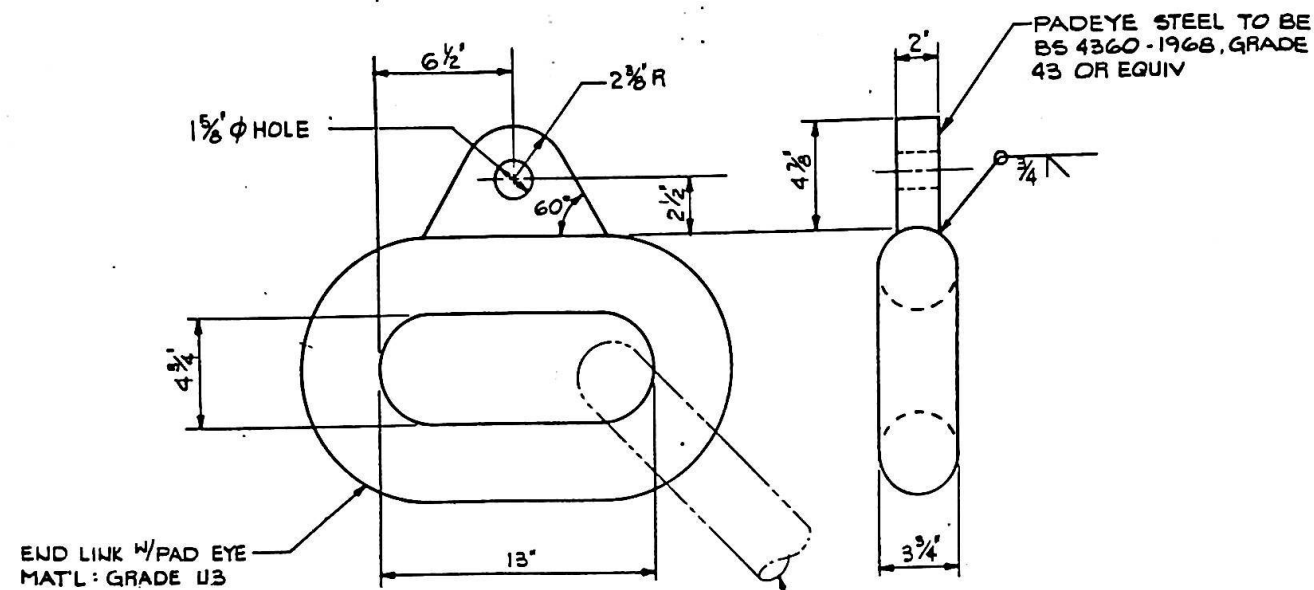
5

4

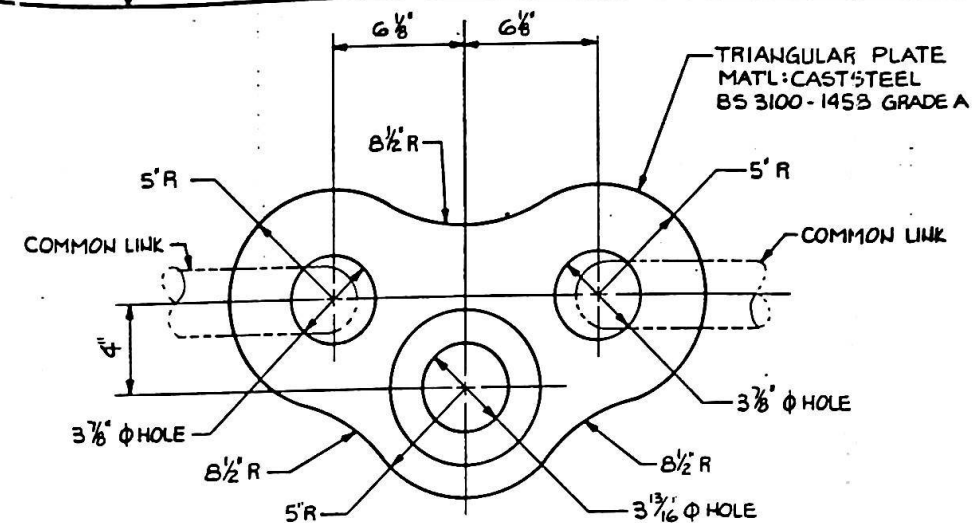
3

2

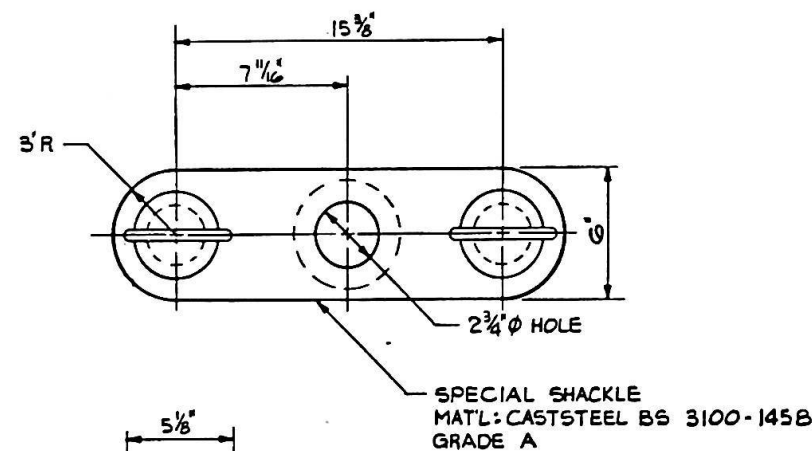
1



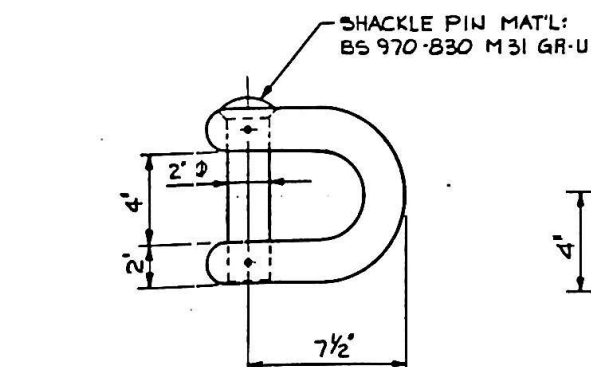
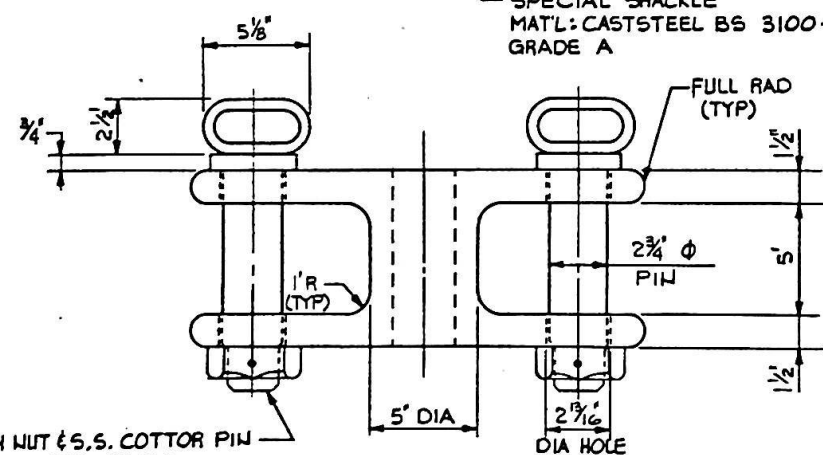
DETAIL C7 ITEM 17



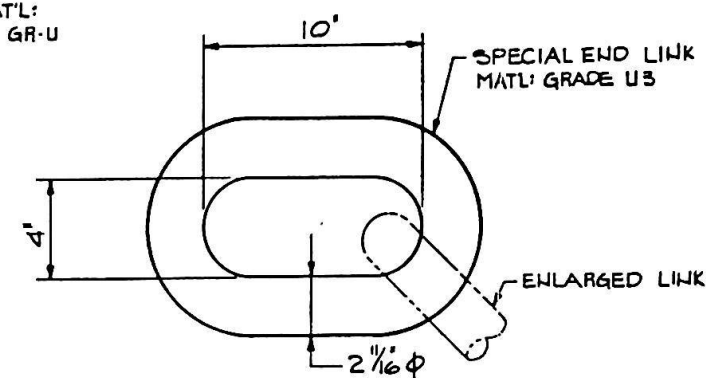
DETAIL C4 ITEM 11



DETAIL A7 ITEM 25



DETAIL A5 ITEM 29



DETAIL A3 ITEM 21

REFERENCES		
NO.	TITLE	DRAWING NO.
1	FLOAT ROPE ASSEMBLY	1191-900 SRT
2	FLOAT ROPE ASSEMBLY DETAILS	1191-900 SRT
3		
4		
5		
6		
REVISIONS		
NO.	DESCRIPTION	DATE
A	ISSUED FOR BID	11/1/80
B	GENERAL REVISION PER DRWG CHECK, ISSUED FOR CONSTRUCTION	11/1/80
C	AS BUILT	11/1/80

32	HEAVY DUTY SHACKLE FOR 3" CIRC ROPE 6.5T S.W.L.		1	1
31	3" END JOINING SHACKLE		1	1
30	3" STUD LINK CHAIN, 7 COMMON LINKS W/1 ENLARGED & 1 END LINK EACH END		1	1
29	SPECIAL SHACKLE FOR TRIANGULAR R (SEE DETAIL A-5 THIS SHEET)		1	2
28	KENTER SHACKLE FOR 2 3/8" CHAIN		1	1
27	TRIANGULAR R FOR 2 3/8" CHAIN W/ 2 3/8" COMMON LINK AT LARGE END ONLY (SEE DETAIL A-7 REF 2)		1	3
26	HEAVY DUTY SHACKLE FOR 8" CIRC THIMBLE GALV W/BACKING NUT & COTTER PIN		1	1
25	SPECIAL SHACKLE FOR 2 3/8" CHAIN (SEE DETAIL A-7 THIS SHEET)		1	2
24	KENTER SHACKLE FOR 2 3/8" CHAIN		3	1
23	2 3/8" STUD LINK CHAIN-1 COMMON, 1 ENLARGED & 1 END LINK W/PEAR LINK FOR 2 3/8" CHAIN CONNECTED TO END LINK		1	1
22	2 3/8" STUD LINK CHAIN-1 COMMON, 1 ENLARGED & 1 END LINK		1	1
21	2 3/8" STUD LINK CHAIN-1 COMMON, 1 ENLARGED & 1 SPECIAL END LINK (FOR END LINK SEE DETAIL A-3)		1	2
20	2 3/8" STUD LINK CHAIN-9 COMMON LINKS		1	1
19	3" STUD LINK CHAIN-1 COMMON, 1 ENLARGED & 1 END LINK W/PEAR LINK FOR 3" CHAIN CONNECTED TO END LINK		1	1
18	SPECIAL SHACKLE FOR 3" CHAIN (SEE DETAIL B-7 REF 2)		1	3
17	3" STUD LINK CHAIN-8 COMMON, 1 ENLARGED & 1 SPECIAL END LINK W/PAD EYE ONE END ONLY (SEE DETAIL C-7 THIS SHEET)		1	2
BILLOF MAT'L CONT ON REF 1				
ITEM	DESCRIPTION	SPEC	QTY	UNIT

INFORMATION HEREIN IS CONFIDENTIAL, PROPRIETARY INFORMATION OF IMODCO Marine Engineering Inc., a subsidiary of AMCA International Corporation. Any person possessing this information is required to accept same in confidence, to agree to make no disclosure, use, reproduction or copy thereof, without the written consent of IMODCO, and to return same on request. Copyright, IMODCO Marine Engineering Inc., 1988, ©		10880 WILSHIRE BLVD., SUITE 1100, LOS ANGELES, CA, U.S.A. 90024	
CLIENT	PROJECT	TITLE	
CPC	SRI LANKA	FLOAT ROPE ASSEMBLY DETAILS	
DIMENSION TOLERANCES		DO NOT SCALE DRAWING	
DRAWN	CHECKED	REVIEWED	APPROVED
BC	JAN 11/80	4/27/80	11/1/80
SCALE	DWG. NO.	REV	
3" = 1'-0"	1191-900	SHEET 2 OF 3	

AS BUILT

